



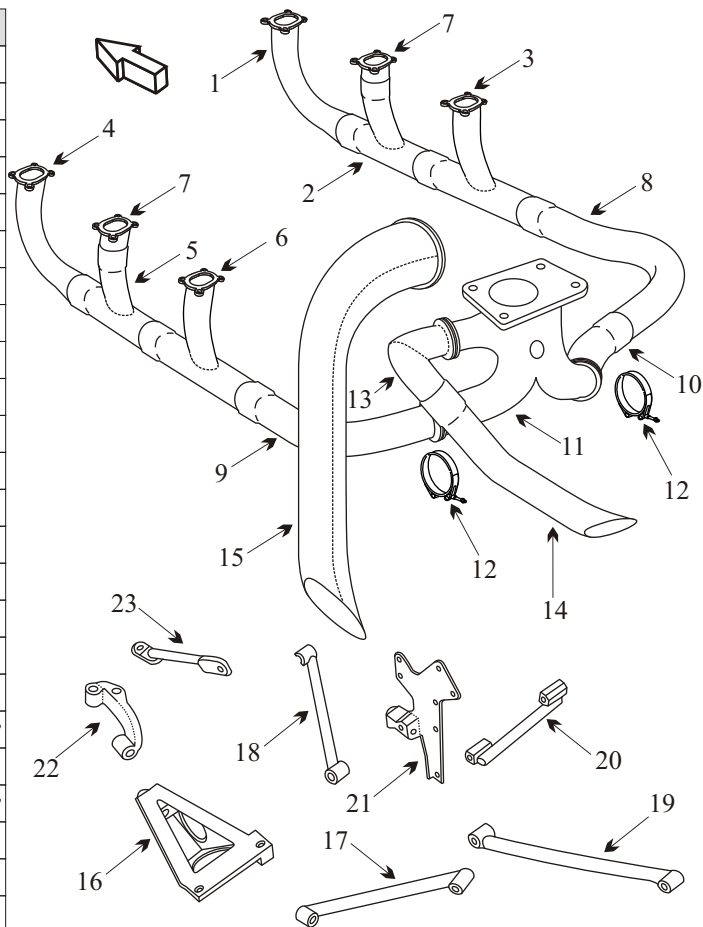
# Exhaust Systems Engine Mounts Carb Air Boxes

Shrouds • Seats • Piston • Turbine • Radial • Vintage • And More...

EXCELLENCE  
Since 1979

## BEECH BARON 56TC WITH LYCOMING TIO-541-E1A4 ENGINE BEECH DUKE 60/A60 WITH LYCOMING TIO-541-E1B4 ENGINE

Item	Part Number	Description
1	77427	RISER RIGHT HAND FWD CYL #2
2	77929	RISER RIGHT HAND CTR CYL #4
3	77428	RISER RIGHT HAND AFT CYL #6
4	77424	RISER LEFT HAND FWD CYL #1
5	77928	RISER LEFT HAND CTR CYL #3
6	77431	RISER LEFT HAND AFT CYL #5
7	77930	ADAPTER CYL #3 & #4
8	77429	ELBOW RIGHT REAR
9	77434	ELBOW LEFT REAR
10	77430	ELBOW ADAPTER
11	77551	WASTEGATE HEADER ASSY
12	24502-200	CLAMP
-	50-389073	CLAMP TAILPIPE
13	60-950022-5	TUBE ASSY UPPER
14	60-950022-7	TUBE ASSY LEFT HAND LOWER
15	60-950018-83	TAILPIPE ASSY
-	60-950022-9	TUBE ASSY RIGHT HAND LOWER
16	LW-10168	BRACKET TURBOCHARGER
17	LW-10167	STRUT COMPRESSOR MOUNTING BRACKET
18	77817	STRUT TURBO MOUNTING BRACKET
19	77767	STRUT COMPRESSOR MOUNTING BRACKET
20	77511	BRACKET COMPRESSOR MOUNTING
21	76623	SUPPORT TURBO AND COMPRESSOR
22	78840	SUPPORT TURBOCHARGER STRUT
23	77164	STRUT TURBOCHARGER
-	24096-200N	GASKET
-	78056	GASKET
-	60-910023-59	ENGINE MOUNT
-	J-9613-9	SHOCK MOUNT
-	VARIOUS	SEAT BASE



- Inspect joints for freedom of movement and distortion.
- Inspect tailpipe for thinning and internal corrosion.
- Slip fit risers should be ordered as a complete assembly to ensure good joint integrity with smooth slip fits.

(toll free) 1-888-388-8803 1-780-447-5955 Fax: 1-780-447-5980  
[sales@acornwelding.com](mailto:sales@acornwelding.com) [parts@acornwelding.com](mailto:parts@acornwelding.com) [www.acornwelding.com](http://www.acornwelding.com)