



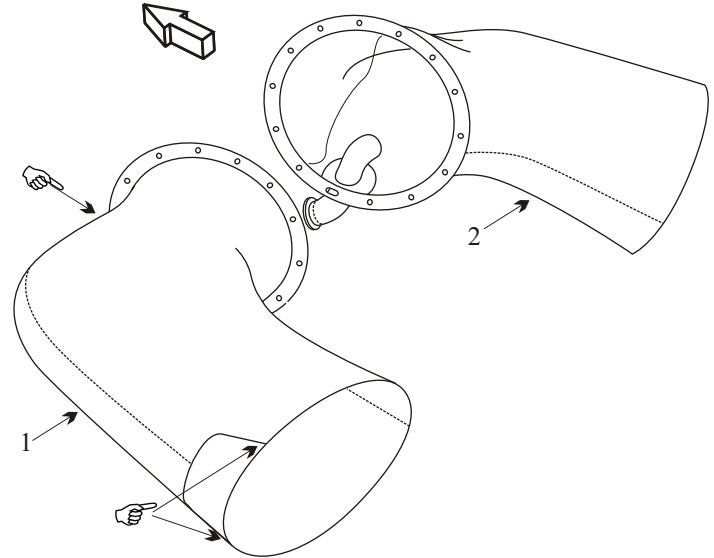
Exhaust Systems Engine Mounts Carb Air Boxes

Shrouds • Seats • Piston • Turbine • Radial • Vintage • And More...



BEECHCRAFT SUPER KING AIR 300/LW & 350/C WITH P&W PT6A-60A ENGINE

Item	Part Number	Description	Code
1	101-950017-33	STACK ASSY LEFT HAND	A
2	101-950017-35	STACK ASSY RIGHT HAND	A
1	101-950017-73	STACK ASSY LEFT HAND	A
2	101-950017-75	STACK ASSY RIGHT HAND	A
1	101-950017-77	STACK ASSY LEFT HAND	A
2	101-950017-79	STACK ASSY RIGHT HAND	A
1	101-950017-101	STACK ASSY LEFT HAND	
2	101-950017-103	STACK ASSY RIGHT HAND	
-	130-950001-1	STACK ASSY LEFT HAND	
-	130-950001-3	STACK ASSY RIGHT HAND	
-	130-950001-29	STACK ASSY LEFT HAND	
-	130-950001-31	STACK ASSY RIGHT HAND	
-	101-910122-51	ENGINE MOUNT	
-	VARIOUS	SEAT BASE	



- These stacks are manufactured with several different materials and thicknesses. Be sure your repair station knows which material they are working on.

☞ Inspect for cracks in this area.

Usable On Codes

A: Acorn Welding has approval by alternate means of compliance to repair the stacks shown beyond Beechcraft 3" crack limitation in the MM. This repair will add strength to the weak areas and the stacks should last longer.

(toll free) 1-888-388-8803 1-780-447-5955 Fax: 1-780-447-5980
 sales@acornwelding.com parts@acornwelding.com www.acornwelding.com