



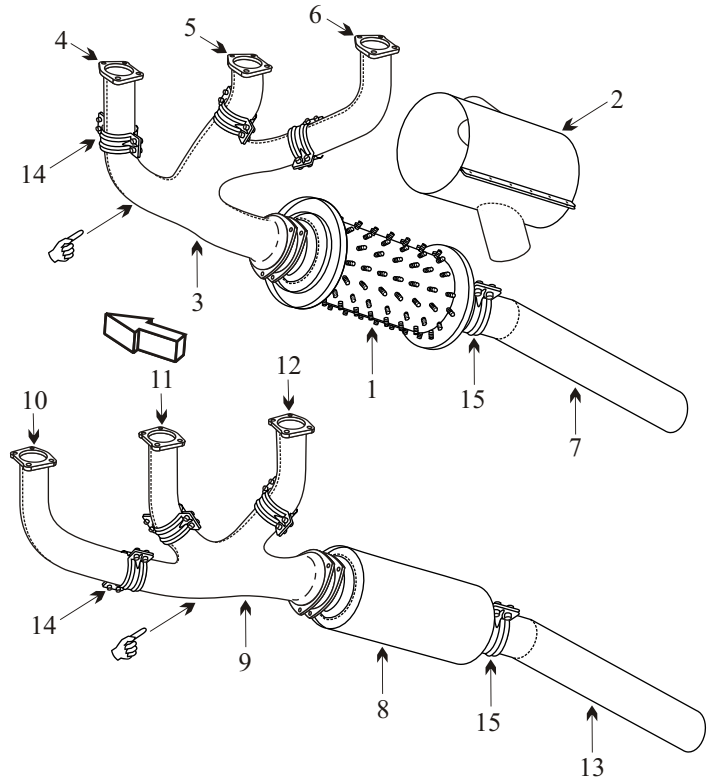
Exhaust Systems Engine Mounts Carb Air Boxes

Shrouds • Seats • Piston • Turbine • Radial • Vintage • And More...



BELLANCA 14-19-2 WITH CONTINENTAL O-470-K ENGINE
BELLANCA 14-12-3 WITH CONTINENTAL IO-470-J ENGINE

| Item | Part Number | Description |
|------|-------------|--------------------------------|
| 1 | 510-9 | MUFFLER RIGHT HAND |
| 2 | 510-45 | SHROUD RIGHT HAND |
| 3 | 510-18 | COLLECTOR ASSY RIGHT HAND |
| 4 | 510-22 | RISER RIGHT HAND FRONT CYL #5 |
| 5 | 510-21 | RISER RIGHT HAND CENTER CYL #3 |
| 6 | 510-20 | RISER RIGHT HAND REAR CYL #1 |
| 7 | 510-17 | TAILPIPE RIGHT HAND |
| 8 | 510-491 | MUFFLER LEFT HAND |
| 9 | 510-11 | COLLECTOR ASSY LEFT HAND |
| 10 | 510-13 | RISER LEFT HAND FRONT CYL #2 |
| 11 | 510-12 | RISER LEFT HAND CENTER CYL #4 |
| 12 | 510-10 | RISER LEFT HAND REAR CYL #6 |
| 13 | 510-16 | TAILPIPE LEFT HAND |
| 14 | 229-004 | CLAMP EXHAUST STACK |
| 15 | 186-8A | CLAMP TAILPIPE |
| - | 628260 | GASKET |
| - | 195263-2 | SPRING KIT |
| - | 191344-20 | CARB AIR BOX |
| - | 191106 | ENGINE MOUNT |
| - | J-7518-4 | SHOCK MOUNT |



● Inner flame tubes must be attached for the muffler to be serviceable.

☞ Inspect collector just before the ball joint for heat distortion and black flaking material.

(toll free) 1-888-388-8803 1-780-447-5955 Fax: 1-780-447-5980
 sales@acornwelding.com parts@acornwelding.com www.acornwelding.com