



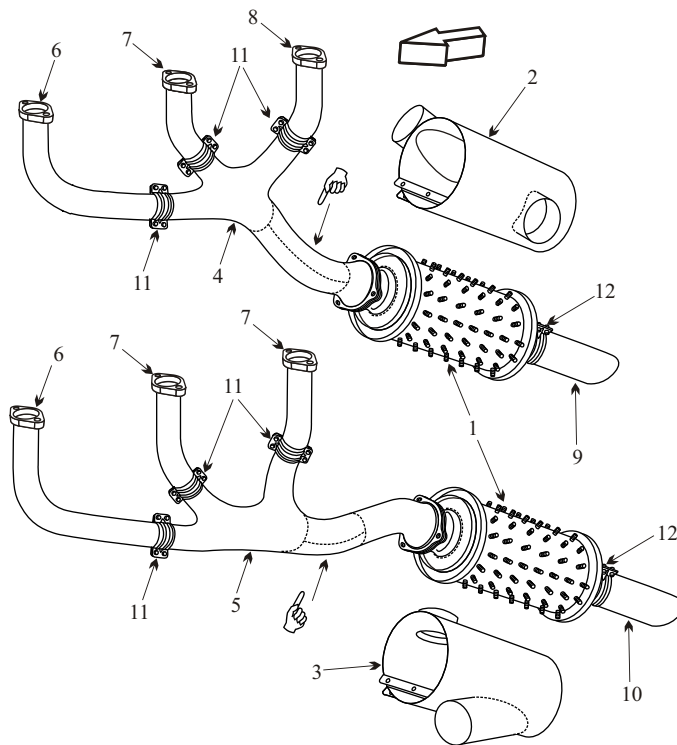
Exhaust Systems Engine Mounts Carb Air Boxes

Shrouds • Seats • Piston • Turbine • Radial • Vintage • And More...



CESSNA 180 EARLY MODEL SN 30000-32150

Item	Part Number	Description
1	0750290-3	MUFFLER
2	0750290-20	SHROUD RIGHT HAND
3	0750290-19	SHROUD LEFT HAND
4	0750290-24	COLLECTOR RIGHT HAND
5	0750290-23	COLLECTOR LEFT HAND
6	0750290-6	RISER FRONT
7	0750290-7	RISER CENTER
8	0750290-8	RISER REAR
9	0750290-26	TAILPIPE RIGHT HAND
10	0750290-25	TAILPIPE LEFT HAND
11	0750290-9	CLAMP 2 PCS
12	186-8	CLAMP TAILPIPE
-	627429	GASKET
-	0750111	CARB AIR BOX
-	0751000	ENGINE MOUNT
-	J-3804-14	SHOCK MOUNT
-	J-3804-15	SHOCK MOUNT
-	022-250	SPRING KIT
-	VARIOUS	SEAT BASE



● To inspect this muffler, it is advisable to pressure test.

● Muffler requires baffles to be serviceable.

☞ This part has a hot area at the elbow. Inspect this area for black flaking metal and bulges.

(toll free) 1-888-388-8803 1-780-447-5955 Fax: 1-780-447-5980
 sales@acornwelding.com parts@acornwelding.com www.acornwelding.com