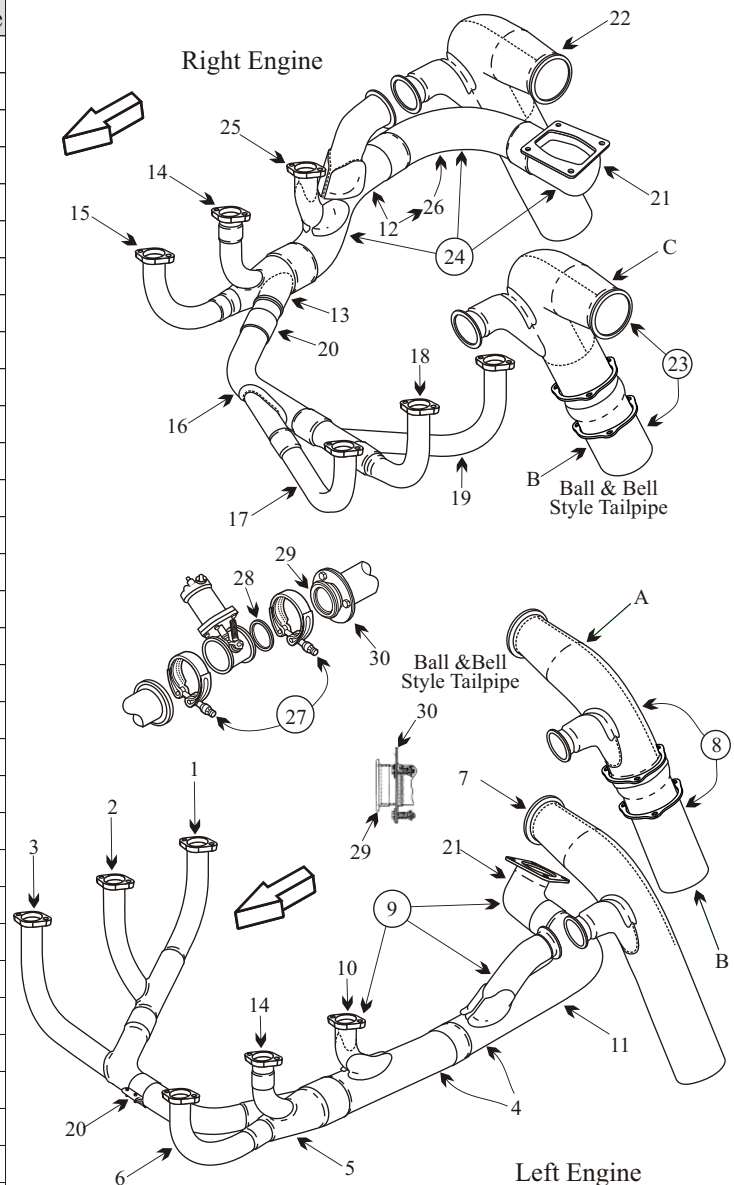


CESSNA 303

SN 1-315

Item	Part Number	Description	Code
1	2554017-25	RISER LEFT ENGINE CYL #1	
2	2554017-24	RISER LEFT ENGINE CYL #3	
3	2554017-26	RISER LEFT ENGINE CYL #5	
4	2554017-22	RISER LEFT ENGINE CYL #2 (ONE PIECE)	
5	2554020-1	EXHAUST COLLECTOR LH LE	
6	2554017-21	RISER LEFT ENGINE CYL #6	
7	2554019-1	TAILPIPE LEFT ENGINE	
8	2554029-19	TAILPIPE LEFT ENGINE	A
9	2554017-201	RISER LEFT ENGINE CYL #2 (ASSY)	A
10	2554017-27	RISER LEFT ENGINE CYL #4	A
11	2554017-30	COLLECTOR TUBE LEFT ENGINE	A
A	2554029-15	TAILPIPE LEFT ENGINE UPPER	A
B	2554029-16	TAILPIPE LEFT ENGINE LOWER	A
12	2554018-23	RISER RIGHT ENGINE CYL #1(ONE PIECE)	
13	2554020-2	EXHAUST COLLECTOR RH RE	
14	2554023-3	RISER ADAPTER CYL #3/4	
15	2554017-21	RISER RIGHT ENGINE CYL #5	
16	2554018-10	EXHAUST COLLECTOR FWD RE	
17	2554018-24	RISER RIGHT ENGINE CYL #6	
18	2554018-25	RISER RIGHT ENGINE CYL #4	
19	2554018-26	RISER RIGHT ENGINE CYL #2	
20	2554025-1	CROSSOVER CLAMP	
21	2554021-1	TURBO INLET ELBOW ASSY RE	
22	2554019-2	TAILPIPE RIGHT ENGINE	
23	2554029-20	TAILPIPE RIGHT ENGINE	A
C	2554029-17	TAILPIPE RIGHT ENGINE UPPER	A
B	2554029-16	TAILPIPE RIGHT ENGINE LOWER	A
24	2554018-201	RISER RIGHT ENGINE CYL #1 (ASSY)	A
25	2554018-28	RISER RIGHT ENGINE CYL #1	A
26	2554018-32	COLLECTOR TUBE RIGHT ENGINE	A
27	18276-225	COUPLING BYPASS BOTH SIDES	
28	24096-225C	GASKET BYPASS BOTH SIDES *	
29	16933-225-6	FLANGE TAILPIPE ADJUSTMENT	A
30	2554033-1	FLANGE TAILPIPE ADJUSTMENT	A
-	S1921-1	TAILPIPE CLAMP	
-	636465	GASKET TURBO CHARGER	
-	2550142-41	TURBO CHARGER SUPPORT LH	A
-	2550142-40	TURBO CHARGER SUPPORT RH	A
-	2550141-6	TURBO CHARGER BRACKET LH	A
-	2550141-5	TURBO CHARGER BRACKET RH	A
-	C299501-0105	SHOCK MOUNT	
-	2551002-1	ENGINE MOUNT LEFT HAND	
-	2551002-29	ENGINE MOUNT LEFT HAND	
-	2551002-31	ENGINE MOUNT LEFT HAND	
-	2551003-1	ENGINE MOUNT RIGHT HAND	
-	2551003-17	ENGINE MOUNT RIGHT HAND	
-	2551003-18	ENGINE MOUNT RIGHT HAND	



Usable on Codes

A: Used when SK303-17 has been installed

- Some of the parts for this aircraft are Inconel. Although Inconel is a far superior metal, it is more difficult to inspect. Inconel tends to corrode from the inside without showing signs of flaking or bulging like stainless steel. The carbon on the inside of the exhaust parts should be removed to properly inspect the components. If the welds are developing pinholes the component may not pass an internal inspection.
- Inspect joints for freedom of movement and distortion.
- Inspect tailpipes for internal pitting and wall thickness especially at the outside radius, which is the thin section, and at support bracket.

* No Gasket used to Tailpipe When SK303-45 Installed