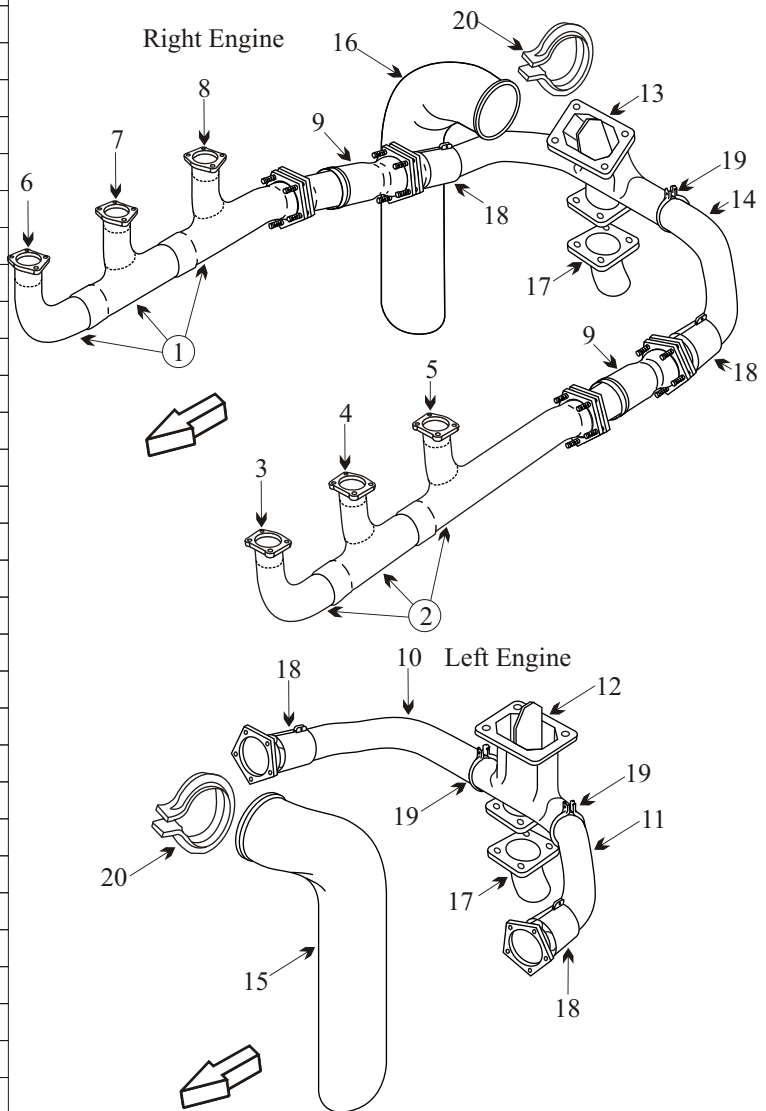


CESSNA 310 P,Q,R/320 D,E,F/401 A,B/402 A,B WITH TCM TS10-520-B ENGINE

Item	Part Number	Description
1	9910295-14/30	STACK ASSY RIGHT HAND
2	9910295-13/29	STACK ASSY LEFT HAND
3	9910295-17/33	STACK LEFT HAND FWD
4	9910295-19/35	STACK LEFT HAND CTR
5	9910295-21/37	STACK LEFT HAND AFT
6	9910295-18/34	STACK RIGHT HAND FWD
7	9910295-20/36	STACK RIGHT HAND CTR
8	9910295-22/38	STACK RIGHT HAND AFT
9	9910296-2/7	SLIP JOINT (INCONEL)
9	9910296-1	SLIP JOINT (STAINLESS)
10	9910301-30	MANIFOLD ELBOW LEFT ENG IB
11	9910301-29	MANIFOLD ELBOW LEFT ENG OB
12	9910301-31	HEADER ASSY LEFT ENGINE
13	9910301-33	HEADER ASSY RIGHT ENGINE
-	636465	GASKET TURBO
14	9910301-32	MANIFOLD ELBOW RIGHT ENG IB
15	0850711-43/51	TAILPIPE LEFT ENGINE
16	0850711-44/52	TAILPIPE RIGHT ENGINE
17	0850713-7	WASTEGATE PIPE OVERBOARD
-	9910306-1	GASKET WASTEGATE
18	0851053-5	HEAT SHROUD
19	NH1000897-60	CLAMP MANIFOLD
-	3063CC262	CLAMP MANIFOLD SUPPORT
20	NH1000897-40	CLAMP TAILPIPE
-	0850715-1	SHIELD OUTBOARD LEFT ENGINE
-	0850716-1	SHIELD INBOARD RIGHT ENGINE
-	565008-5	SHIELD INBOARD LEFT ENGINE
-	565008-6	SHIELD OUTBOARD RIGHT ENGINE
-	0850715-1	SHIELD MANIFOLD OUTBOARD
-	0850716-1	SHIELD MANIFOLD INBOARD
-	5654030-2	BRACKET LH OR RH
-	VARIOUS	INDUCTION AIR ASSY
-	VARIOUS	INDUCTION AIR CANISTER
-	0851139-3/4	BRACKET TURBO SUPPORT RH
-	0851138-4	BRACKET TURBO SUPPORT LH
-	5650105-1	BRACKET TURBO SUPPORT
-	5655202-10	BRACKET TURBO SUPPORT RH
-	5655202-11	BRACKET TURBO SUPPORT LH
-	628260	GASKET
-	011-252	SPRING KIT
-	VARIOUS	SEAT BASE



AD 2000-01-16

Applies to all S/N's

Visual inspection of exhaust system every 50 hrs or 30 days of operation.

Remove/inspect tailpipes for cracks, corrosion, holes or distortion every 12 months.

Inspect/pressure test exhaust system every 12 months.
Replace multi-segment V-band clamps every 500 hrs of operation.

Remove exhaust system from slip-joints aft to all turbo-charger components every 2500 hrs of operation or 12 yrs whichever occurs first and send to approved repair facility.

- Inspect tailpipes for internal pitting and wall thickness especially at the outside radius, which is the thin section, and at support bracket.

- Inspect turbo header for internal pitting, warped or cracked flow divider and thin sections.

- Slip fit stacks should be ordered as a complete assembly to ensure good joint integrity with smooth slip fits.