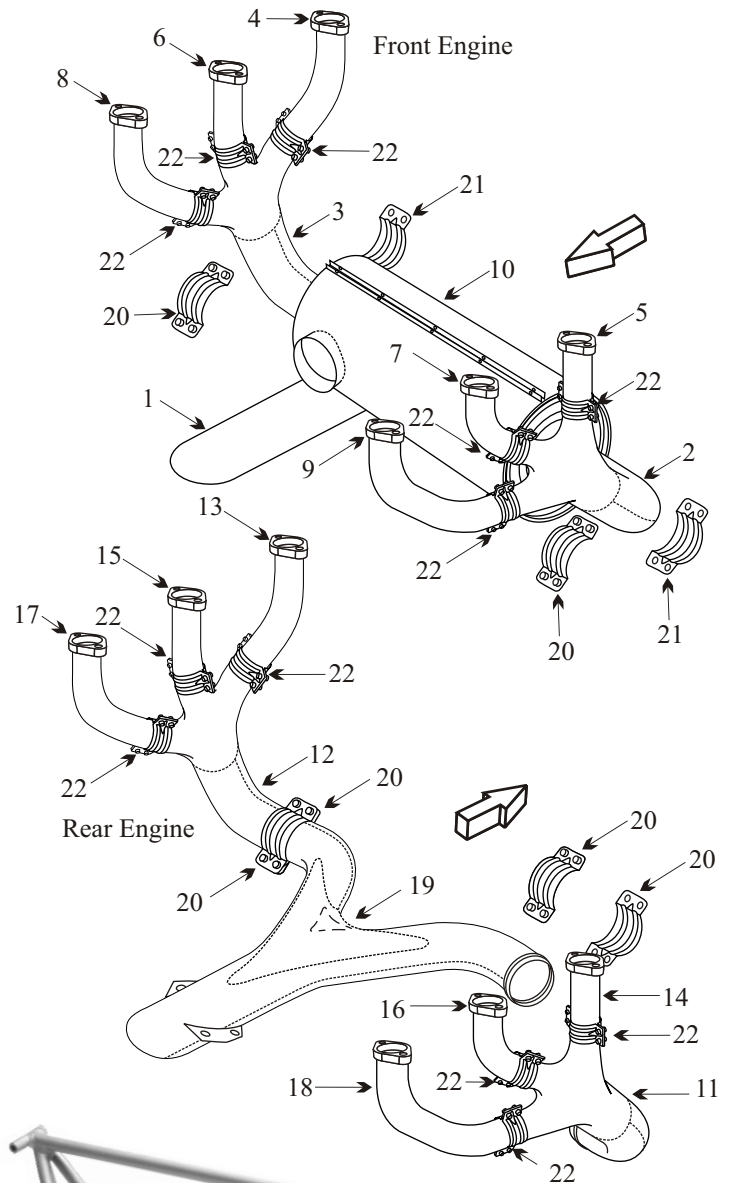


## CESSNA 336

Item	Part Number	Description
1	1454009-3	MUFFLER
2	1455014-16	COLLECTOR LEFT HAND FWD ENGINE
3	1455014-31	COLLECTOR RIGHT HAND FWD ENGINE
4	1455014-27	RISER CYL #1
5	1455014-17	RISER CYL #2
6	1455014-26	RISER CYL #3
7	1455014-18	RISER CYL #4
8	1455014-25	RISER CYL #5
9	1455014-19	RISER CYL #6
10	1455009-2	SHROUD
11	1455014-32	COLLECTOR RIGHT HAND AFT ENGINE
12	1444014-33	COLLECTOR LEFT HAND AFT ENGINE
13	1455011-27	RISER CYL #1
14	1455014-17	RISER CYL #2
15	1455014-26	RISER CYL #3
16	1455014-18	RISER CYL #4
17	1455014-25	RISER CYL #5
18	1455011-19	RISER CYL #6
19	1455010-1	TAILPIPE REAR
20	0750161-22	CLAMP NO PIN 2 5/8" (6 Required)
21	0750161-24	CLAMP WITH PIN 2 5/8" (2 Required)
22	0750161-25	CLAMP HALF 1 3/4" (24 Required) *
-	1455013-3	BRACKET ASSY LEFT HAND
-	1455013-4	BRACKET ASSY RIGHT HAND
-	1455013-1	SUPPORT ASSY REAR
-	970	GASKET
23	1451009-1	ENGINE MOUNT FRONT
-	1451008-1	ENGINE MOUNT REAR
-	J-7764-10	SHOCK MOUNTS



● Inspect riser stacks for cracks at the flange reinforcement doublers, at the weld edges and the flange base. The inspection is more successful if the carbon residue is removed from inside the stack.

● Inspect tailpipes for internal pitting and wall thickness especially at the outside radius, which is the thin section, and at support bracket.

● This muffler does not require flame tubes or cones.

\* Note: Only 3 bolts are used on Cylinder #1 and #5

