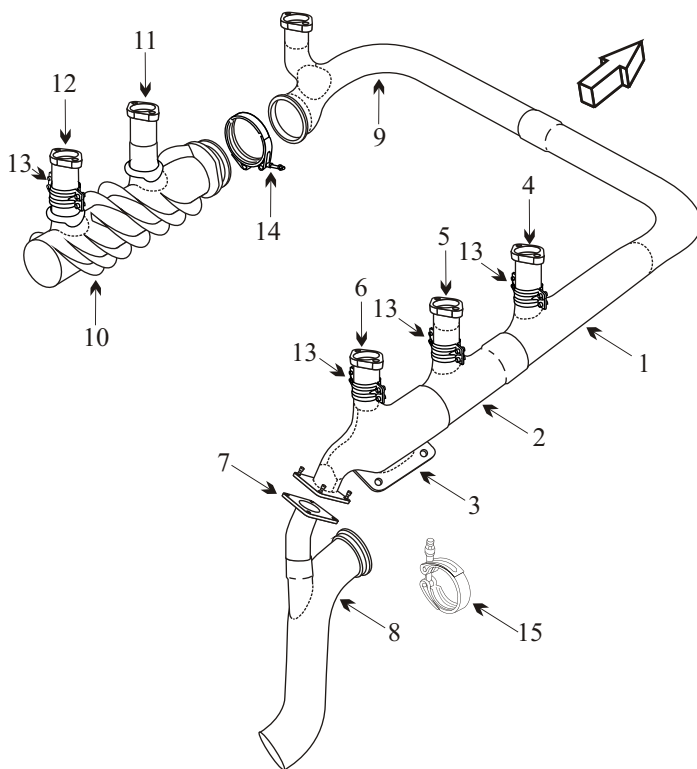


CESSNA T337H SKYMASTER SN 01816-01951
CESSNA T337P SKYMASTER SN P3370226-0356
FRONT ENGINE

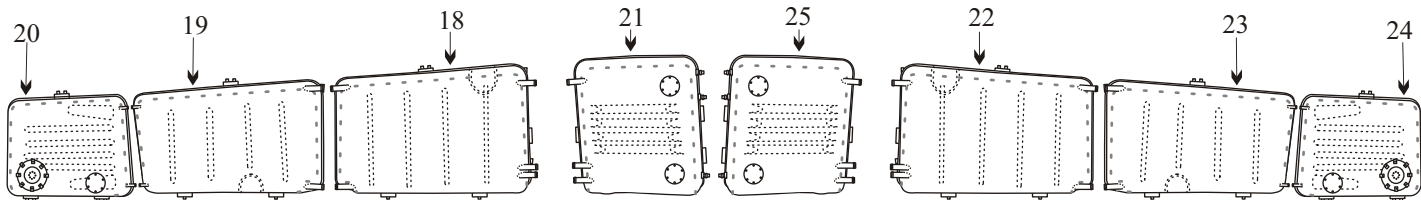
Item	Part Number	Description
1	1555010-21	CROSSOVER CYL #5
2	1555010-10	STACK RIGHT HAND CTR CYL #3
3	1555010-101	HEADER
4	1555010-94	RISER CYL #5
5	1555010-96	RISER CYL #3
6	1555010-98	RISER RIGHT HAND REAR
7	1555010-87	TAILPIPE ADAPTER
8	1552174-1	TAILPIPE W/O CARGO PAC
NS	1555010-83	TAILPIPE WITH CARGO PAC
9	1554008-20	CROSSOVER LEFT HAND FRONT
10	1554008-32	HEATER CORE ASSY
11	1554008-13	RISER LEFT HAND CENTER
12	1554008-12	RISER LEFT HAND REAR
NS	1554007-1	SHROUD INBOARD
NS	1554007-2	SHROUD OUTBOARD
13	1250860-29	CLAMP HALF
14	24540-300	CLAMP CROSSOVER TO HEATER
15	NH1000897-40	CLAMP TAILPIPE
NS	1550148-2	GASKET WASTEGATE
NS	970	GASKET
NS	1451008-30	ENGINE MOUNT
NS	J-9613-31	SHOCK MOUNT
NS	1550171-1	FILTER DUCT ASSY
NS	1550171-7	INDUCTION DUCT ASSY
NS	AWI1552174-1	INDUCTION DUCT BOX
NS	AWI1555010-83	INDUCTION DUCT BOX
NS	632884	GASKET WASTEGATE
NS	1550021-1	SUPPORT TURBO FORWARD
NS	1550025-1	SUPPORT TURBO REAR



- Inspect outlet stack for chaffing from the shroud.
- Inspect that joints are free of movement and distortion.
- Inspect under clamps for corrosion, poor fit or cracks.

SN 337-01607 AND ON, LONG RANGE P337-0194 AND ON

Item	Part Number	Description	Item	Part Number	Description
18	1516131-29	FUEL TANK LEFT HAND INBOARD	22	1516131-30	FUEL TANK RIGHT HAND INBOARD
19	1516132-15	FUEL TANK MID MAIN LEFT HAND	23	1516132-16	FUEL TANK MID MAIN RIGHT HAND
20	1516134-15	FUEL TANK OUTBOARD MAIN LEFT HAND	24	1516134-16	FUEL TANK OUTBOARD MAIN RIGHT HAND
21	1516133-33	FUEL TANK INBOARD LEFT HAND	25	1516133-34	FUEL TANK INBOARD RIGHT HAND



- If the aircraft has remained in outdoor storage without fuel in the tanks, check the inside of the tanks for corrosion at the low points. If corrosion is found in one tank, the other tanks may be in the same condition.