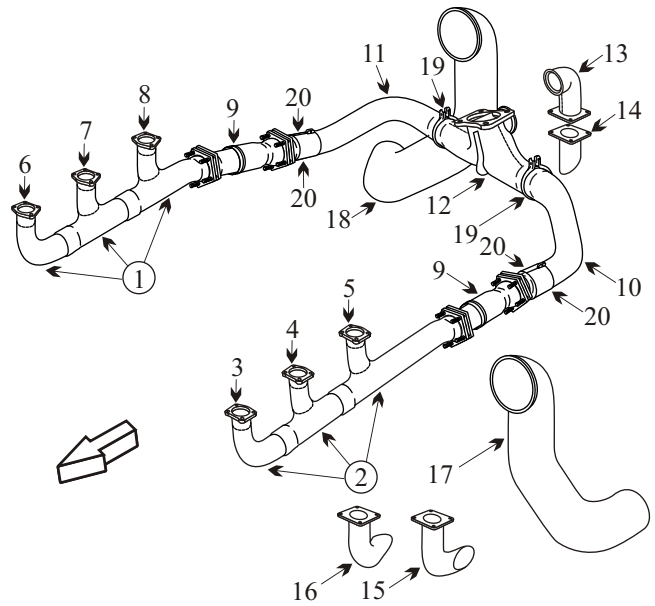


CESSNA 340/340A/414/414A

Item	Part Number	Description	Code
1	9910295-14/30	STACK ASSY RIGHT HAND	
2	9910295-13/29	STACK ASSY LEFT HAND	
3	9910295-17/33	STACK LEFT HAND FWD	
4	9910295-19/35	STACK LEFT HAND CTR	
5	9910295-21/37	STACK LEFT HAND AFT	
6	9910295-18/34	STACK RIGHT HAND FWD	
7	9910295-20/36	STACK RIGHT HAND CTR	
8	9910295-22/38	STACK RIGHT HAND AFT	
9	9910296-2/7	SLIP JOINT (INCONEL)	
9	9910296-1	SLIP JOINT (STAINLESS STEEL)	
10	9910299-15/29	MANIFOLD ELBOW LEFT HAND	A
10	9910299-33	MANIFOLD ELBOW LEFT HAND	B/F
10	9910377-1	MANIFOLD ELBOW LEFT HAND	A/E
11	9910299-16/30	MANIFOLD ELBOW RIGHT HAND	A
11	9910299-34	MANIFOLD ELBOW RIGHT HAND	A/F
11	9910377-2	MANIFOLD ELBOW RIGHT HAND	E
12	9910299-40	HEADER (9910299-9)	A/H
12	9910299-39	HEADER (9910299-8)	B/H
12	9910341-1/3	HEADER	C
13	9910299-10	BYPASS ELBOW	A
13	9910299-35	BYPASS ELBOW	B
14	9910299-36	WASTEGATE OVERBOARD	
15	9910299-13/23/37	WASTEGATE OVERBOARD LE	D
16	9910299-14/24/38	WASTEGATE OVERBOARD RE	D
-	9910306-1	GASKET WASTEGATE VALVE	G
17	9910299-31	TAILPIPE LEFT ENGINE	
18	9910299-32	TAILPIPE RIGHT ENGINE	
19	NH1000897-20	CLAMP MANIFOLD TO HEADER <small>340A 414A</small>	B
-	17189-250N1	GASKET MANIFOLD TO HEADER <small>340A 414A</small>	B
-	NH1000897-50	CLAMP TAILPIPE <small>340A 414A</small>	A
20	NH1000897-70	CLAMP HEADER TO WASTEGATE <small>414A</small>	
-	17189-200N1	GASKET WASTEGATE	B
-	NH1000897-60	CLAMP MANIFOLD TO HEADER	A
-	0851053-5	SHROUD HALF	
-	0850715-1	HEAT SHIELD ON OB LH ENGINE	
-	0850716-1	HEAT SHIELD ON IB RH ENGINE	
-	565008-5	HEAT SHIELD ON OB LH ENGINE	
-	565008-6	HEAT SHIELD ON IB RH ENGINE	
-	5654030-2	BRACKET LH OR RH	
-	628260	GASKET	
-	011-252	SPRING KIT	
-	VARIOUS	INDUCTION AIR ASSY	
-	VARIOUS	SEAT BASE	
-	5650105-1	BRACKET TURBO SUPPORT	D
-	5655202-10	BRACKET TURBO SUPPORT RH	F
-	5655202-11	BRACKET TURBO SUPPORT LH	F
-	4256AB200	CLAMP HEADER TO WASTEGATE ELBOW	B
-	U84-2108H	CLAMP WASTEGATE OB SUPPORT <small>340A</small>	E
-	U84C400SS	CLAMP EXHAUST OB SUPPORT	F
-	3063CC400	CLAMP EXHAUST OB SUPPORT	D
-	U84C450SS	CLAMP EXHAUST OB SUPPORT	



340/340A/414/414A

AD 2000-01-16

Applies to all S/N's

Visual inspection of exhaust system every 50 hrs or 30 days of operation.

Remove/inspect tailpipes for cracks, corrosion, holes or distortion every 12 months.

Inspect/pressure test exhaust system every 12 months.

Replace multi-segment V-band clamps every 500 hrs of operation.

Remove exhaust system from slip-joints aft to all turbo-charger components every 2500 hrs of operation or 12 yrs whichever occurs first and send to approved repair facility.

340A

AD 98-24-14

Applies to S/N's 215 thru 1817 with P/N 9910299-25 & 26 in the exhaust system. Replace P/N 9910299-25 & 26 with approved new parts.

Usable on Codes

- A: Mating flanges do not require seal
- B: Mating flanges that require seal
- C: 340A Model only
- D: 414A
- E: 414, 414A
- F: 340, 340A, 414
- G: All
- H: 340,414,414A

• Inspect tailpipes for internal pitting and wall thickness especially at the outside radius, which is the thin section, and at support bracket.

• Inspect joints for freedom of movement and distortion.

• Inspect turbo header for internal pitting, warped or cracked flow divider and thin sections.

• Some of the parts for this aircraft are Inconel. Although Inconel is a far superior metal, it is more difficult to inspect. Inconel tends to corrode from the inside without showing signs of flaking or bulging like stainless steel. The carbon on the inside of the exhaust parts should be removed to properly inspect the components. If the welds are developing pinholes the component may not pass an internal inspection.

• Slip fit stacks should be ordered as a complete assembly to ensure good joint integrity with smooth slip fits.