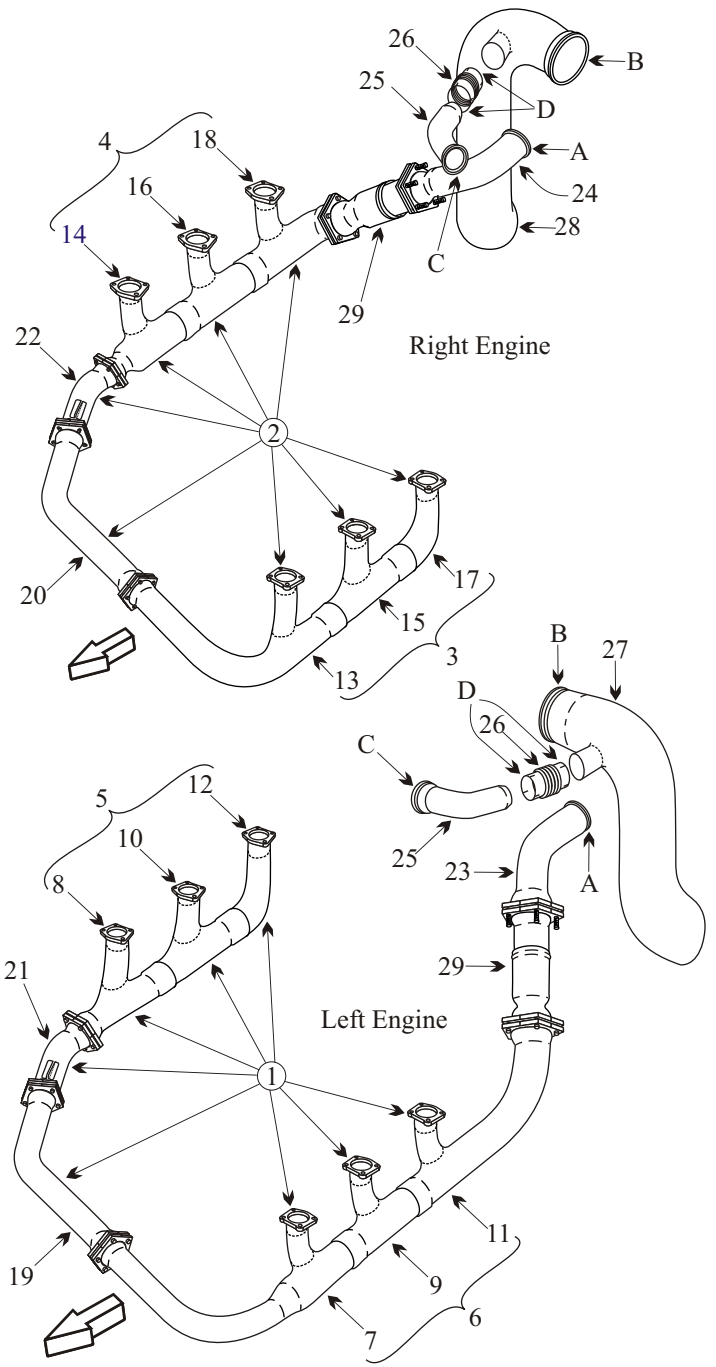


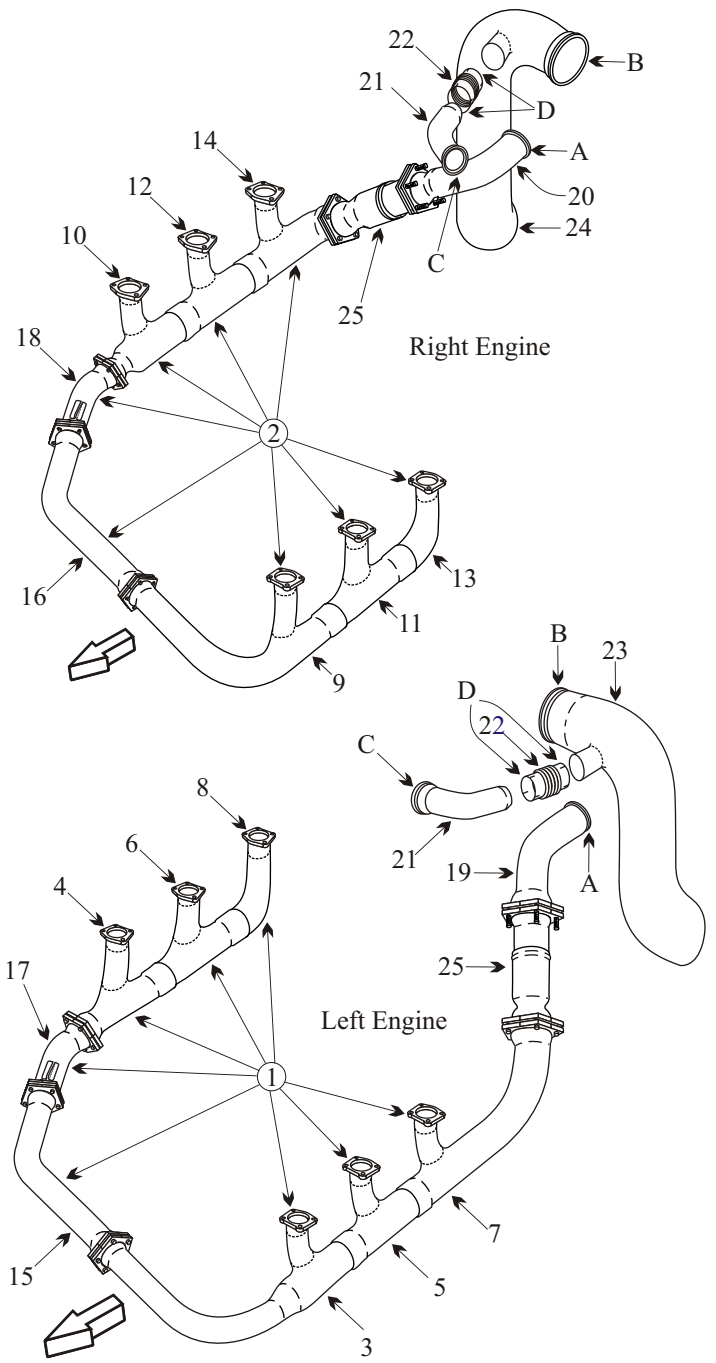
CESSNA 421A/B GOLDEN EAGLE STAINLESS STEEL

Item	Part Number	Description
1	5155125-9	EXHAUST ASSEMBLY LEFT ENGINE
2	5155125-10	EXHAUST ASSEMBLY RIGHT ENGINE
3	5155156-206	EXHAUST STACK ASSEMBLY RE IB
4	5155156-207	EXHAUST STACK ASSEMBLY RE OB
5	5155156-205	EXHAUST STACK ASSEMBLY LE IB
6	5155156-204	EXHAUST STACK ASSEMBLY LE OB
7	5155156-9	EXHAUST SEGMENT LE OB FWD
8	5155156-12	EXHAUST SEGMENT LE IB FWD
9	5155156-8	EXHAUST SEGMENT LE OB CTR
10	5155156-13	EXHAUST SEGMENT LE IB CTR
11	5155156-7	EXHAUST SEGMENT LE OB AFT
12	5155156-14	EXHAUST SEGMENT LE IB AFT
13	5155156-22	EXHAUST SEGMENT RE IB FWD
14	5155156-19	EXHAUST SEGMENT RE OB FWD
15	5155156-23	EXHAUST SEGMENT RE IB CTR
16	5155156-18	EXHAUST SEGMENT RE OB CTR
17	5155156-24	EXHAUST SEGMENT RE IB AFT
18	5155156-17	EXHAUST SEGMENT RE OB AFT
19	5155156-10	CROSSOVER LEFT ENGINE
20	5155156-21	CROSSOVER RIGHT ENGINE
21	5155156-11	ELBOW LEFT ENGINE
22	5155156-20	ELBOW RIGHT ENGINE
23*	5155156-51	ELBOW TURBO INLET LEFT ENGINE (SEALING-SS321)
24*	5155156-50	ELBOW TURBO INLET RIGHT ENGINE (SEALING-SS321)
25	5155156-49	TURBO BYPASS
26	5155156-1/4	FLEX JOINT
27	5155156-47	EXHAUST TAILPIPE LEFT ENGINE
28	5155156-48	EXHAUST TAILPIPE RIGHT ENGINE
29	9910314-1/8	SLIP JOINT (INCONEL)
29	5155158-9	SLIP JOINT (STAINLESS STEEL)
A	NH1000897-30	TURBO INLET CLAMP (2 NEEDED)
A*	24096-300N	TURBO INLET GASKET (SEALING TYPE ONLY)
B	NH1000897-50	TAILPIPE CLAMP (2 NEEDED)
C	4256AB200	WASTEGATE CLAMP (2 NEEDED)
C	24096-200N	WASTEGATE GASKET (2 NEEDED)
D	U84-210SH	FLEX JOINT CLAMP (4 NEEDED)
-	628260	NO BLOW EXHAUST GASKET (6/ENGINE)
-	MS20500-428	EXHAUST CYLINDER NUT (24/ENGINE)
-	011-252	SPRING KIT (POST MEB99-18) (5/ENGINE)



CESSNA 421A/B GOLDEN EAGLE INCONEL

Item	Part Number	Description
1	9910379-1/21	EXHAUST ASSEMBLY LEFT ENGINE (INCO)
2	9910379-2/22	EXHAUST ASSEMBLY RIGHT ENGINE (INCO)
3	9910379-3/23	EXHAUST SEGMENT LE OB FWD (INCO)
4	9910379-4/24	EXHAUST SEGMENT LE IB FWD (INCO)
5	9910379-5/25	EXHAUST SEGMENT LE OB CTR (INCO)
6	9910379-6/26	EXHAUST SEGMENT LE IB CTR (INCO)
7	9910379-7/27	EXHAUST SEGMENT LE OB AFT (INCO)
8	9910379-8/28	EXHAUST SEGMENT LE IB AFT (INCO)
9	9910379-9/29	EXHAUST SEGMENT RE IB FWD (INCO)
10	9910379-10/30	EXHAUST SEGMENT RE OB FWD (INCO)
11	9910379-11/31	EXHAUST SEGMENT RE IB CTR (INCO)
12	9910379-12/22	EXHAUST SEGMENT RE OB CTR (INCO)
13	9910379-13/33	EXHAUST SEGMENT RE IB AFT (INCO)
14	9910379-14/34	EXHAUST SEGMENT RE OB AFT (INCO)
15	9910379-15/35	CROSSOVER LEFT ENGINE (INCO)
16	9910379-16/36	CROSSOVER RIGHT ENGINE (INCO)
17	9910379-17/37	ELBOW LEFT ENGINE (INCO)
18	9910379-18/38	ELBOW RIGHT ENGINE (INCO)
19	9910379-19/39	ELBOW TURBO INLET LEFT ENGINE <small>SEAL-LESS INCO</small>
20	9910379-20/40	ELBOW TURBO INLET RIGHT ENGINE <small>SEAL-LESS INCO</small>
19*	5155156-51	ELBOW TURBO INLET LEFT ENGINE <small>SEALING S/S 321</small>
20*	5155156-50	ELBOW TURBO INLET RIGHT ENGINE <small>SEALING S/S 321</small>
21	5155156-49	TURBO BYPASS
22	5155156-1/4	FLEX JOINT
23	5155156-47	EXHAUST TAILPIPE LEFT ENGINE
24	5155156-48	EXHAUST TAILPIPE RIGHT ENGINE
25	9910314-1/8	SLIP JOINT (INCONEL)
A	NH1000897-30	TURBO INLET CLAMP (2 NEEDED)
A*	24096-300N	TURBO INLET GASKET (SEALING TYPE ONLY)
B	NH1000897-50	TAILPIPE CLAMP (2 NEEDED)
C	4256AB200	WASTEGATE CLAMP (2 NEEDED)
C	24096-200N	WASTEGATE GASKET (2 NEEDED)
D	U84-210SH	FLEX JOINT CLAMP (4 NEEDED)
-	628260	NO BLOW EXHAUST GASKET (6/ENGINE)
-	MS20500-428	EXHAUST CYLINDER NUT (24/ENGINE)
-	011-252	SPRING KIT (POST MEB99-18) (5/ENGINE)
9910379-1 Thru 20		Are Sealing Type Inconel Exhaust System
9910379-21 Thru 40		Are Seal-Less Type Inconel Exhaust System



CESSNA 421A/B GOLDEN EAGLE NOTES:

- Inspect tailpipes for internal pitting and wall thickness especially at the outside radius, which is the thin section, and at support bracket.
- Inspect joints for freedom of movement and distortion.
- Slip fit stacks should be ordered as a complete assembly to ensure good joint integrity with smooth slip fits.

AD 2000-01-16
Applies to all S/N's
Visual inspection of exhaust system every 50 hrs or 30 days of operation.
Remove/inspect tailpipes for cracks, corrosion, holes or distortion every 12 months.
Inspect/pressure test exhaust system every 12 months.
Replace multi-segment V-band clamps every 500 hrs Of operation.
Remove exhaust system from slip-joints aft to all turbo-charger components every 2500 hrs of operation or 12 yrs whichever occurs first and send to approved repair facility.

SL ME77-1
● 3-Bolt Style Parts should be replaced in accordance with SL ME77-1. These parts are not interchangeable with 5 Bolt Systems.
* New Style Turbine inlet Elbows (9910379-19/20) have a reinforced turbine inlet clamp flange. This flange deletes the need of metallic gaskets at this joint. Installation of gaskets with these new elbows can severely distort the clamps and lead to clamp failure.
● Exhaust Banks must be replaced as complete sets as per SL ME77-1