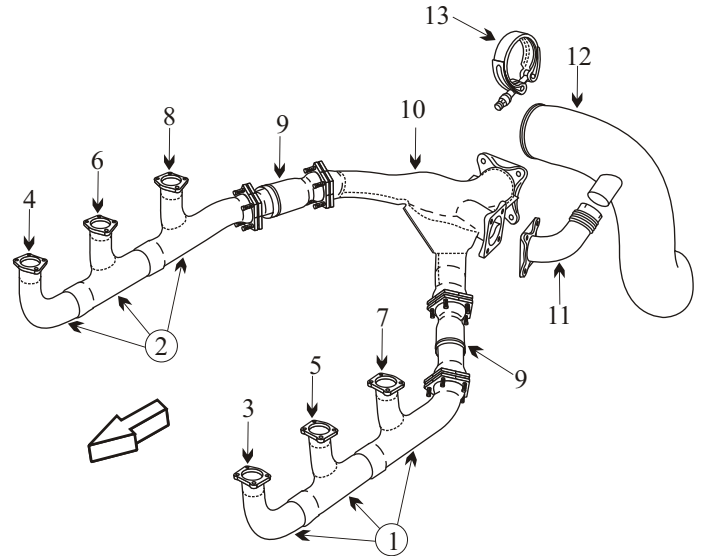


CESSNA 421C EAGLE II & EAGLE III

Item	Part Number	Description
1	9910295-15	STACK ASSY LEFT HAND
2	9910295-16	STACK ASSY RIGHT HAND
3	9910295-17	RISER LEFT HAND FRONT
4	9910295-18	RISER RIGHT HAND FRONT
5	9910295-19	RISER LEFT HAND CENTER
6	9910295-20	RISER RIGHT HAND CENTER
7	9910295-21	RISER LEFT HAND REAR
8	9910295-22	RISER RIGHT HAND REAR
9	9910296-2/7	SLIP JOINT
10	9910300-13	HEADER
10	9910300-7	HEADER
11	9910300-3	BYPASS ELBOW
12	9910300-1	TAILPIPE LEFT ENGINE
-	9910300-2	TAILPIPE RIGHT ENGINE
-	9910300-4	HEAT SHIELD RIGHT HAND
-	9910300-5	HEAT SHIELD LEFT HAND
-	628260	GASKET
-	011-252	SPRING KIT
13	NH1000897-50	CLAMP TAILPIPE
-	3063CC262	CLAMP MANIFOLD SUPPORT
-	3063CC450	CLAMP TAILPIPE SUPPORT (2 NEEDED)
-	9910306-1	GASKET WASTEGATE
-	002957006	GASKET WASTEGATE
-	VARIOUS	INDUCTION AIR CANISTER
-	VARIOUS	SEAT BASE
-	5155011-1	BRACKET TURBO SUPPORT RIGHT HAND
-	5155011-21	BRACKET TURBO SUPPORT LEFT HAND



- Inspect tailpipes for internal pitting and wall thickness especially at the outside radius, which is the thin section, and at support bracket.

- Inspect joints for freedom of movement and distortion.

- Inspect turbo header for internal pitting, warped and or cracked flow divider and thin sections.

- Some of the parts for this aircraft are Inconel. Although Inconel is a far superior metal, it is more difficult to inspect. Inconel tends to corrode from the inside without showing signs of flaking or bulging like stainless steel. The carbon on the inside of the exhaust parts should be removed to properly inspect the components. If the welds are developing pinholes the component may not pass an internal inspection.

- Slip fit stack assemblies should be ordered in a complete assembly to ensure good joint integrity with smooth slip fitting.

AD 2000-01-16

Applies to all S/N's

Visual inspection of exhaust system every 50 hrs or 30 days of operation.

Remove/inspect tailpipes for cracks, corrosion, holes or distortion every 12 months.

Inspect/pressure test exhaust system every 12 months.

Replace multi-segment V-band clamps every 500 hrs of operation.

Remove exhaust system from slip-joints aft to all turbo-charger components

every 2500 hrs of operation or 12 yrs whichever occurs first and send to approved repair facility.