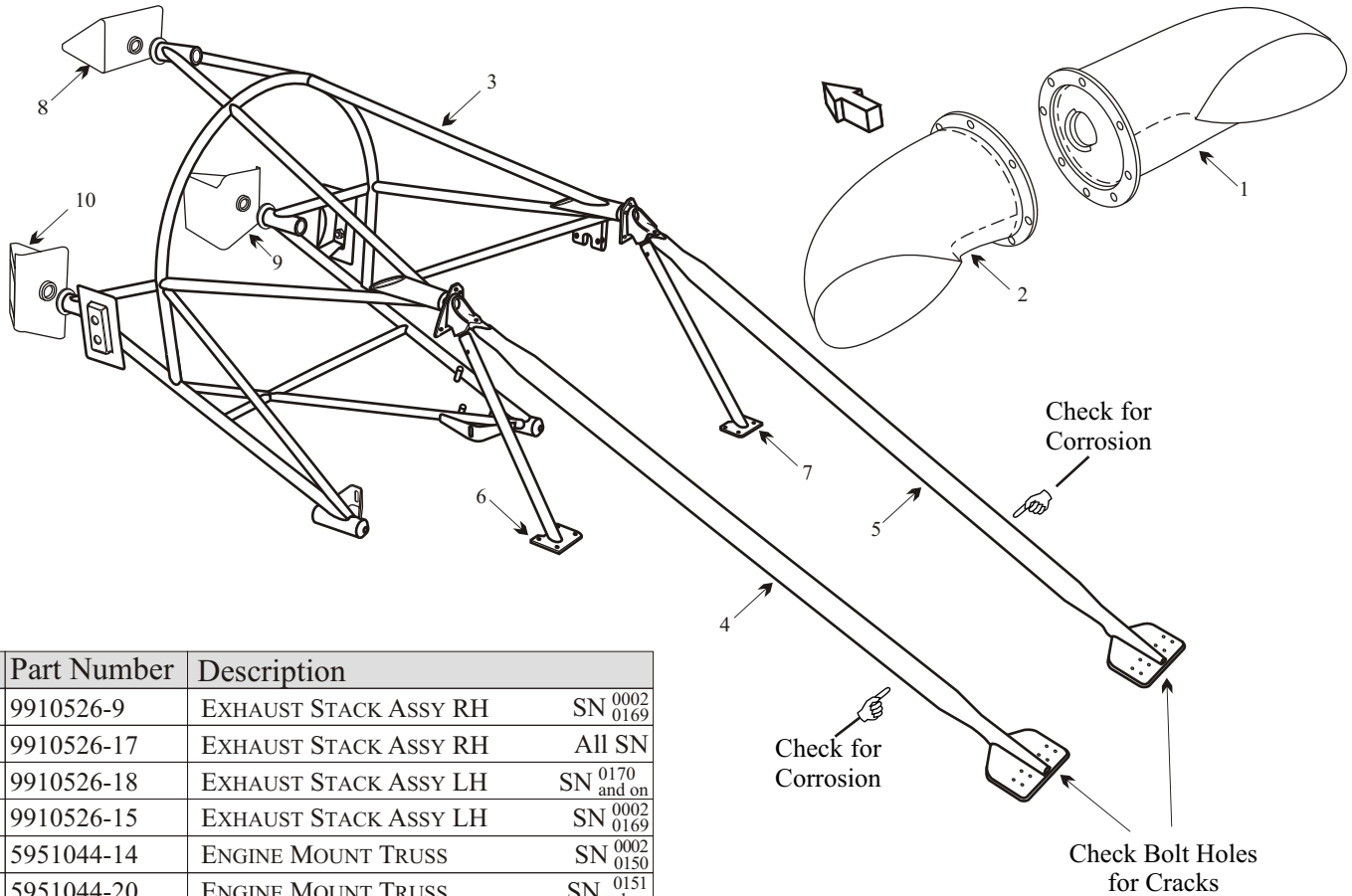


## CESSNA 425 CORSAIR/CONQUEST I



Item	Part Number	Description	
1	9910526-9	EXHAUST STACK ASSY RH	SN 0002 0169
1	9910526-17	EXHAUST STACK ASSY RH	All SN
2	9910526-18	EXHAUST STACK ASSY LH	SN 0170 and on
2	9910526-15	EXHAUST STACK ASSY LH	SN 0002 0169
3	5951044-14	ENGINE MOUNT TRUSS	SN 0002 0150
3	5951044-20	ENGINE MOUNT TRUSS	SN 0151 and on
3	5951062-1	ENGINE MOUNT TRUSS (CAA ONLY)	SN 0002 0150
3	5951062-5	ENGINE MOUNT TRUSS (CAA ONLY)	SN 0151 and on
4	5951051-35	TRUSS ASSEMBLY LE/OB	
5	5951051-36	TRUSS ASSEMBLY RE/OB	
5	5951051-37	TRUSS ASSEMBLY LE/IB	
4	5951051-38	TRUSS ASSEMBLY RE/IB	
6	5951051-39	BRACE ASSEMBLY LE/OB	
7	5951051-40	BRACE ASSEMBLY RE/OB	
7	5951051-41	BRACE ASSEMBLY LE/IB	
6	5951051-42	BRACE ASSEMBLY RE/IB	
8	5951048-1	TOP ENGINE MOUNT ASSY	
9	5951048-2	RIGHT ENGINE MOUNT ASSY	SN 0002 0210
10	5951048-3	LEFT ENGINE MOUNT ASSY	SN 0002 0210
9	5951048-14	RIGHT ENGINE MOUNT ASSY	SN 0211 and on
10	5951048-15	LEFT ENGINE MOUNT ASSY	SN 0211 and on

- Inspect attach flange and bleed air weld area for cracks.
- PJ82-33 Exhaust stubs must be inspected every 100 hours of operation. Exhaust stubs must be welded as per PJ82-33 in addition to the spot welds.
- Acorn Welding can perform inspections in accordance to Cessna SID 54-10-01 and 54-10-02. Acorn Welding Can also replace corroded struts and perform repairs to comply with these inspections.
- All weld repairs must be X-Ray inspected post repair.