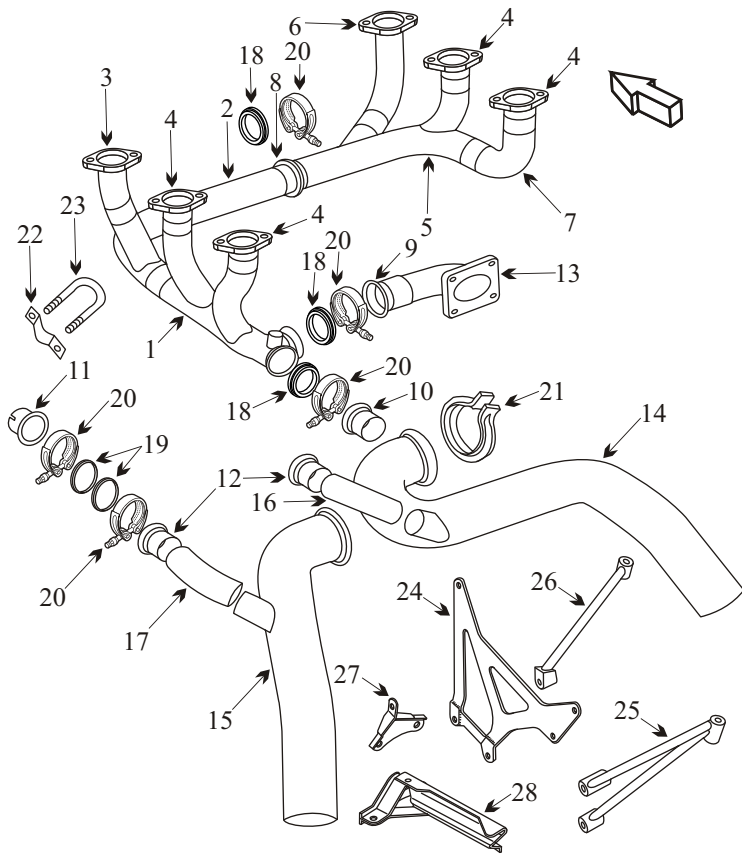


PIPER PA-23-250T WITH LYCOMING T10-540 ENGINE

| Item | Part Number | Description |
|------|--------------|-------------------------------------|
| 1 | LW-12281 | LEFT HAND CYL #4, #6 |
| 2 | LW-16901 | CROSSOVER CYL #2 |
| 3 | 78687 | RISER CYL #2 |
| 4 | 78054 | RISER CYL #3, #4, #5 & #6 |
| 5 | 78062 | RIGHT HAND CYL #3 |
| 6 | 78061 | RISER CYL #1 |
| 7 | 78063 | ELBOW CYL #5 |
| 8 | LW-16902 | CROSSOVER FLANGE |
| 9 | 78064 | PLENUM FLANGE EXHAUST MANIFOLD |
| 10 | LW-11657 | MALE WASTEGATE FLANGE INDEXING |
| 11 | LW-11656 | FEMALE WASTEGATE FLANGE INDEXING |
| 12 | LW-11223 | BYPASS FLANGE |
| 13 | LW-15417 | TRANSITION |
| 14 | 32781-00 | TAILPIPE RIGHT HAND |
| 15 | 32779-00 | TAILPIPE LEFT HAND |
| 16 | 32848-00 | BYPASS ELBOW RIGHT HAND |
| 17 | 32847-00 | BYPASS ELBOW LEFT HAND </td |
| 18 | 17189-225 | 2 1/4" V-BAND CLAMP SEAL 3 REQ |
| 19 | 75845 | 2 1/4" GASKET V-BAND COUPLING 2 REQ |
| 20 | LW-12093-6 | 2 1/4" O.D. V-BAND COUPLING 5 REQ |
| 21 | NH1005834-10 | CLAMP TAILPIPE |
| 22 | LW-11654 | CLAMP EXHAUST MANIFOLD JOINT |
| 23 | LW-11655 | U-BOLT |
| NS | 77611 | GASKET |
| 24 | 77983 | TURBO SUPPORT |
| 25 | 77982 | STRUT TURBO RIGHT HAND |
| 26 | 77981 | STRUT TURBO LEFT HAND |
| 27 | LW-10119 | SUPPORT TURBO TOP RIGHT ENGINE |
| 28 | LW-10985 | HEAT SHIELD MANIFOLD |
| NS | 32301-000 | ENGINE MOUNT LEFT ENGINE |
| NS | 32301-005 | ENGINE MOUNT RIGHT ENGINE |
| NS | J-9613-12 | SHOCK MOUNT |
| NS | 32355-00 | INDUCTION TUBE ASSY |
| NS | VARIOUS | SEAT BASE |



AD 68-07-04

Applies to S/N's 27-2505 and on with engine mount P/N 31215.

Inspect engine mount for cracks.

Inspection required for every 50 hrs of operation after 1000 hrs time in service.

- Inspect joints for freedom of movement and distortion.
- Inspect the transition or plenum for blisters or cracks.
- Inspect the by-pass area for hot spots, blisters and cracks.