



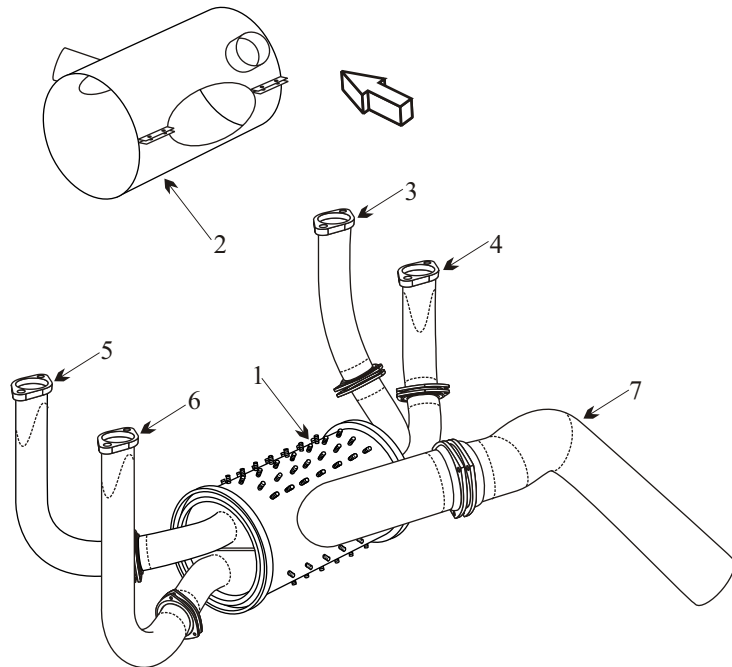
Exhaust Systems Engine Mounts Carb Air Boxes

Shrouds • Seats • Piston • Turbine • Radial • Vintage • And More...



MOONEY M-20E/M-20F WITH LYCOMING IO 360 ENGINE STUDED MUFFLER AND BALL JOINT TYPE

Item	Part Number	Description	
1	850-69	MUFFLER WITH STUDS	
2	850-59	SHROUD	
3	850-14	STACK RIGHT FRONT CYL #1	
4	850-9	STACK RIGHT REAR CYL #3	
5	850-18	STACK LEFT FRONT CYL #2	
6	850-20	STACK LEFT REAR CYL #4	
7	850-3	TAILPIPE	
-	77611	GASKET	
-	011-254	SPRING KIT FOR STACKS	
-	326-251	SPRING KIT FOR TAILPIPE	
-	600075-11	CARB AIR BOX	
-	590000-501/11	ENGINE MOUNT	
-	J-7402-16	SHOCK MOUNTS	SN ¹⁰¹ ₄₇₀
-	J-9613-12	SHOCK MOUNTS	SN ⁴⁷¹ ₁₁₈₀



- Inner flame tubes must be attached for the muffler to be serviceable.
- Inspect riser stacks for cracks at the flange reinforcement doublers, at the weld edges and the flange base. The inspection is more successful if the carbon residue is removed from inside the stack.

● Inspect tailpipe for thinning and internal corrosion.

(toll free) 1-888-388-8803 1-780-447-5955 Fax: 1-780-447-5980
sales@acornwelding.com parts@acornwelding.com www.acornwelding.com