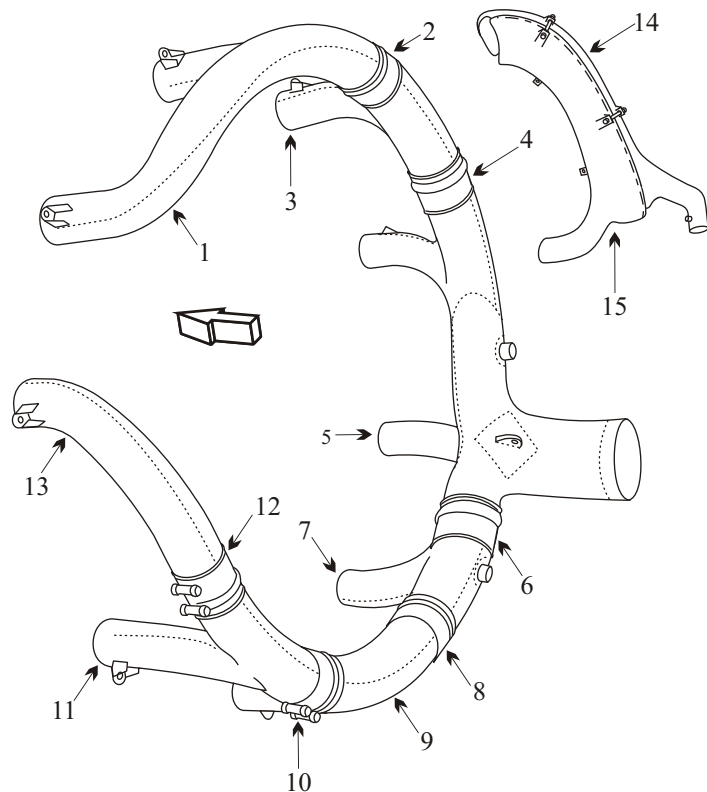


HARVARD T6 WITH P&W 1340 ENGINE

Item	Part Number	Description
1	66-42002-32	EXHAUST SEGMENT
2	66-42002-22	EXHAUST CLAMP
3	66-42002-33	EXHAUST SEGMENT
4	66-42002-23	EXHAUST CLAMP
5	66-42002-34	EXHAUST OUTLET
6	66-42002-24	EXHAUST CLAMP
7	66-42002-35	EXHAUST SEGMENT
8	66-42002-23	EXHAUST CLAMP
9	66-42002-36	EXHAUST SEGMENT </td
10	66-42002-22	EXHAUST CLAMP
11	66-42002-37	EXHAUST SEGMENT
12	66-42002-21	EXHAUST CLAMP
13	66-42002-38	EXHAUST SEGMENT
14	88-53305	CARB HEAT MUFF OUTER
15	88-53306	CARB HEAT MUFF INNER
NS	66-42053-4	TUBE ASSY TAILPIPE
NS	66-42054	END ASSY TAILPIPE



● Acorn Welding has many years of experience with round engines. There are advantages to sending us your complete system when an overhaul or repair is required. It will ensure better joint integrity, a stress free system plus the inner cowlings will stay cleaner from combustion by-products. With our system there should be no need for repairs between engine changes. We maintain standard factory sizes so new factory parts will fit.