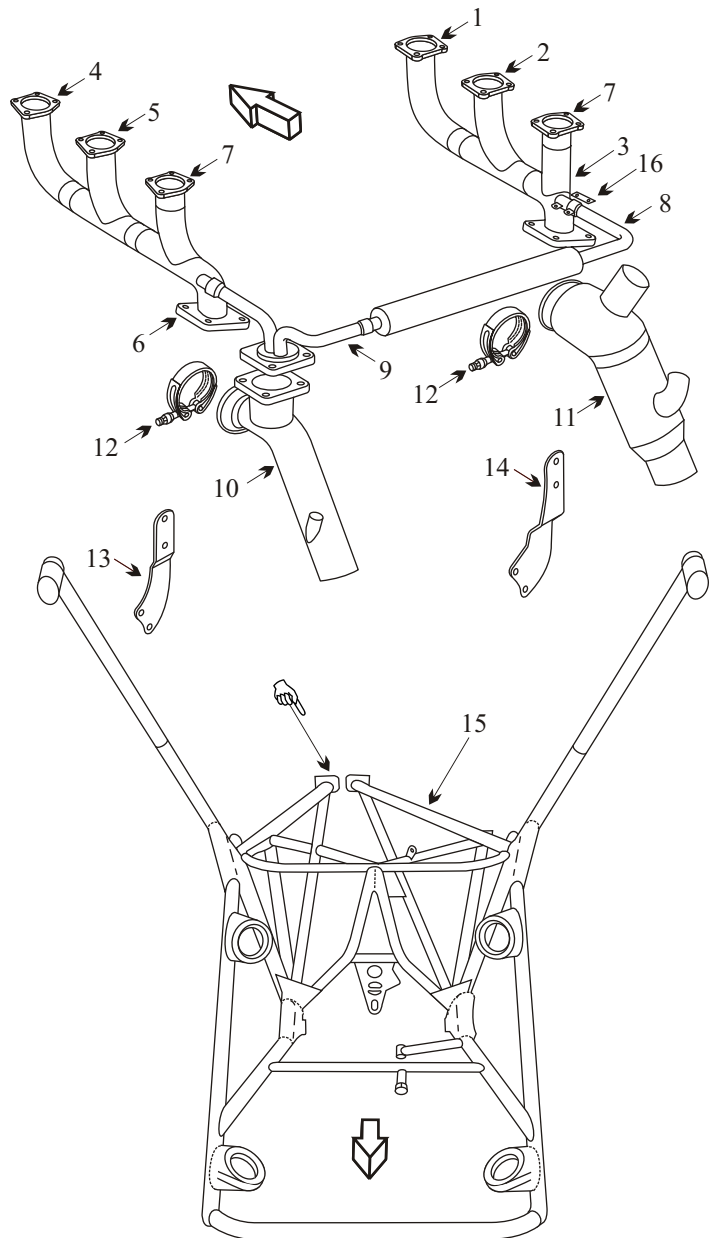


## PIPER PA-46-310P MALIBU WITH CONTINENTAL TS10-520-BE ENGINE

Item	Part Number	Description	
1	646463-105	ELBOW ASSY RIGHT HAND	
1	654322	ELBOW ASSY RIGHT HAND	
2	646463-133	RISER RIGHT HAND CENTER	
2	654324	RISER RIGHT HAND CENTER	
3	646463-182/184	HEADER RIGHT HAND TEE ASSEMBLY	
3	654327	HEADER RIGHT HAND TEE ASSEMBLY	
4	646463-106	ELBOW ASSY LEFT HAND	
4	654323	ELBOW ASSY LEFT HAND	
5	646463-134	RISER TEE LEFT HAND CENTER	
5	654325	RISER TEE LEFT HAND CENTER	
6	646463-181	HEADER LEFT HAND TEE ASSEMBLY	
6	654326	HEADER LEFT HAND TEE ASSEMBLY	
7	646463-201	RISER ADAPTER	
7	654332	RISER ADAPTER	
8	646463-214	CROSSOVER BYPASS ASSEMBLY	TWO PIECE
8	646463-216	CROSSOVER BYPASS ASSEMBLY	ONE PIECE
8	654331	CROSSOVER BYPASS ASSEMBLY	
9	646463-300	HEADER BYPASS LEFT HAND	
9	654321	HEADER BYPASS LEFT HAND	
10	646463-170	TAILPIPE LEFT HAND	
10	654329	TAILPIPE LEFT HAND	
11	646463-190	TAILPIPE RIGHT HAND	
12	653337	CLAMP TAILPIPE TO TURBO	
13	646306	TURBO BRACKET LEFT HAND	
14	646307	TURBO BRACKET RIGHT HAND	
-	628260	GASKET	
-	652456	GASKET WASTEGATE	
-	636465	GASKET TURBO CHARGER	
-	89721-034	INDUCTION AIR BOX ASSY	
15	84010-002	ENGINE MOUNT RDC ENHANCED	
-	J-9316-55	SHOCK MOUNT	
-	VARIOUS	SEAT BASE	
16	654333	TIE ROD	



- Inspect transition for blisters or cracks starting at the bypass.
- Inspect joints for freedom of movement and distortion.
- Some of the parts for this aircraft are Inconel. Although Inconel is a far superior metal, it is more difficult to inspect. Inconel tends to corrode from the inside without showing signs of flaking or bulging like stainless steel. The carbon on the inside of the muffler should be removed to properly inspect the component. If the welds are developing pinholes the component will not pass an internal inspection.
- Slip fit stacks should be ordered as a complete assembly to ensure good joint integrity with smooth slip fits.

☞ Acorn Welding alternate means of compliance RDC #C-RA03-047 will also relieve repetitive inspections, and produce a stronger and safer mount.

### SB #1103

Applies to S/N's 8408002 thru 4608140.  
Inspect engine mount actuator attach feet area for cracks and replace mount if cracks found.  
Inspection required every 100 hrs of operation till mount replaced.

Acorn Welding alternate means of compliance RDC #C-RA03-047 will also relieve repetitive inspections, and produce a stronger and safer mount.

### TCM SB10-1

Ensure Transition Tie rod and bushing are able to move. Check transition for cracking at flange and in body. 25 hour inspection: Initial inspection on systems with prior maintenance history. Inspect Transition assembly after installing new transition.

50 hour visual inspection: Components, joints and attachment points. Reference TCM SB for more details.