



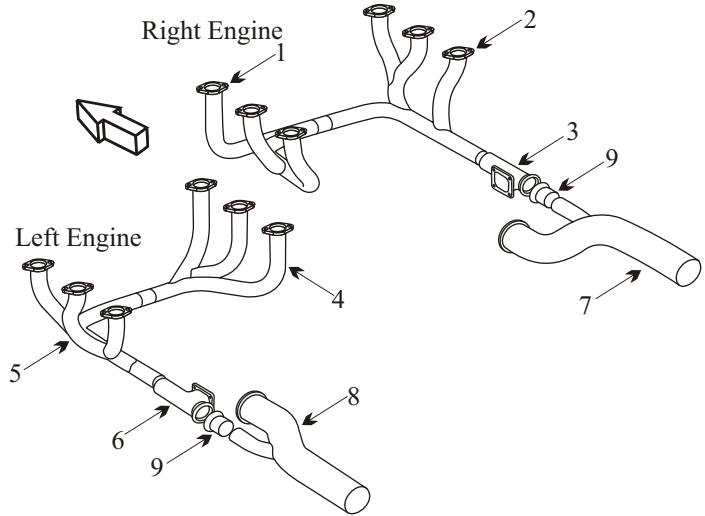
Exhaust Systems Engine Mounts Carb Air Boxes

Shrouds • Seats • Piston • Turbine • Radial • Vintage • And More...



PIPER PA-23-250T AIR RESEARCH

Item	Part Number	Description
1	286-P23-024-121	STACK INBOARD RIGHT ENGINE
2	286-P23-024-117	STACK OUTBOARD RIGHT ENGINE
3	286-P23-060-7	PLENUM RIGHT HAND
4	286-P23-024-119	STACK INBOARD LEFT ENGINE
5	286-P23-024-115	STACK OUTBOARD LEFT ENGINE
6	286-P23-060-3	PLENUM LEFT HAND
7	286-P23-060-9	TAILPIPE RIGHT HAND
8	286-P23-060-5	TAILPIPE LEFT HAND
9	116933-225-3	BYPASS FLANGE



- Inspect joints for freedom of movement and distortion.
- Inspect the transition or plenum for blisters or cracks.
- Inspect for clearance around the front crossover. This area is usually tight but should not be rubbing on the cowling.
- Acorn's Tailpipes are SB-273 Compliant

(toll free) 1-888-388-8803 1-780-447-5955 Fax: 1-780-447-5980
sales@acornwelding.com parts@acornwelding.com www.acornwelding.com