



Exhaust Systems Engine Mounts Carb Air Boxes

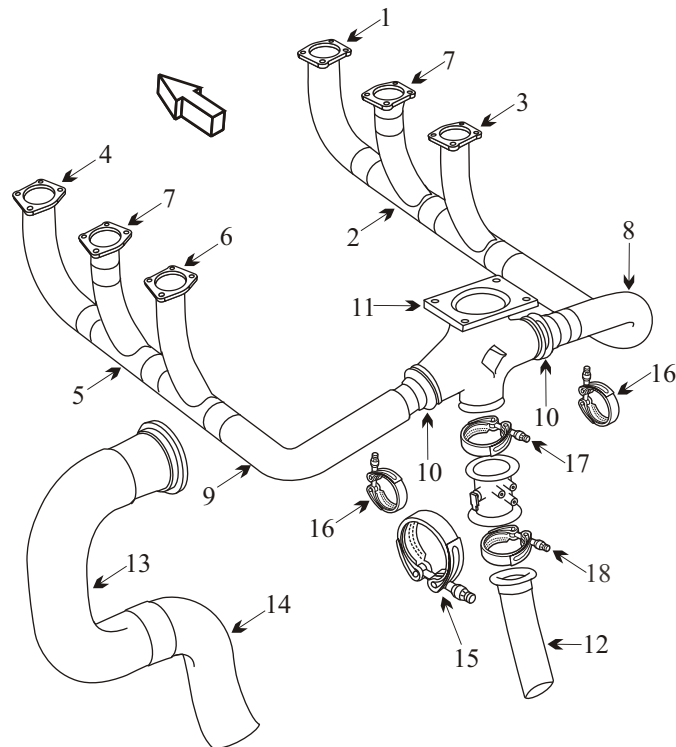
Shrouds • Seats • Piston • Turbine • Radial • Vintage • And More...



PIPER PA-31 P-425 NAVAJO

WITH LYCOMING TIGO-541-E1A ENGINE

Item	Part Number	Description
1	77427	STACK RIGHT FRONT CYL #2
2	78287	STACK RIGHT CENTER CYL #4
3	78011	STACK RIGHT REAR CYL #6
4	78004	STACK LEFT FRONT CYL #1
5	78005	STACK LEFT CENTER CYL #3
6	78286	STACK LEFT REAR CYL #5
7	77930	FLANGE ADAPTER
8	78012	ELBOW RIGHT REAR
9	78008	ELBOW LEFT REAR
10	LW-13027	ADAPTER RIGHT REAR & LEFT REAR
11	LW-11016	TRANSITION
12	48788-004	WASTEGATE OVERBOARD
13	46323-005	TAILPIPE UPPER
14	48788-005	TAILPIPE LOWER
15	NH1000897-50	CLAMP TAILPIPE
16	LW-12093-5	CLAMP ADAPTER TO TRANSITION
17	LW-12125-3	CLAMP TRANSITION TO WASTEGATE
18	LW-12093-6	CLAMP WASTEGATE TO BYPASS
-	78083	GASKET ADAPTER TO TRANSITION
-	75845	GASKET WASTEGATE BOTH ENDS
-	46306-000	ALTERNATE AIR BOX ASSY
-	45297-000	ENGINE MOUNT
-	J-9612-8	SHOCK MOUNT
-	J-7763-26	SHOCK MOUNT
-	VARIOUS	SEAT BASE



- Inspect two piece tailpipes to ensure they can be disassembled and the ends are standard nominal dimensions. This will determine if the new ordered stack will fit into the old stack.
- Inspect joints for freedom of movement and distortion.
- Inspect tailpipes for internal pitting and wall thickness especially at the outside radius, which is the thin section, and at support bracket.
- Inspect transition header for cracks

Note: Clamp LW-12125-3 is life limited to 600 hours as per Lycoming SB395

(toll free) 1-888-388-8803 1-780-447-5955 Fax: 1-780-447-5980
 sales@acornwelding.com parts@acornwelding.com www.acornwelding.com