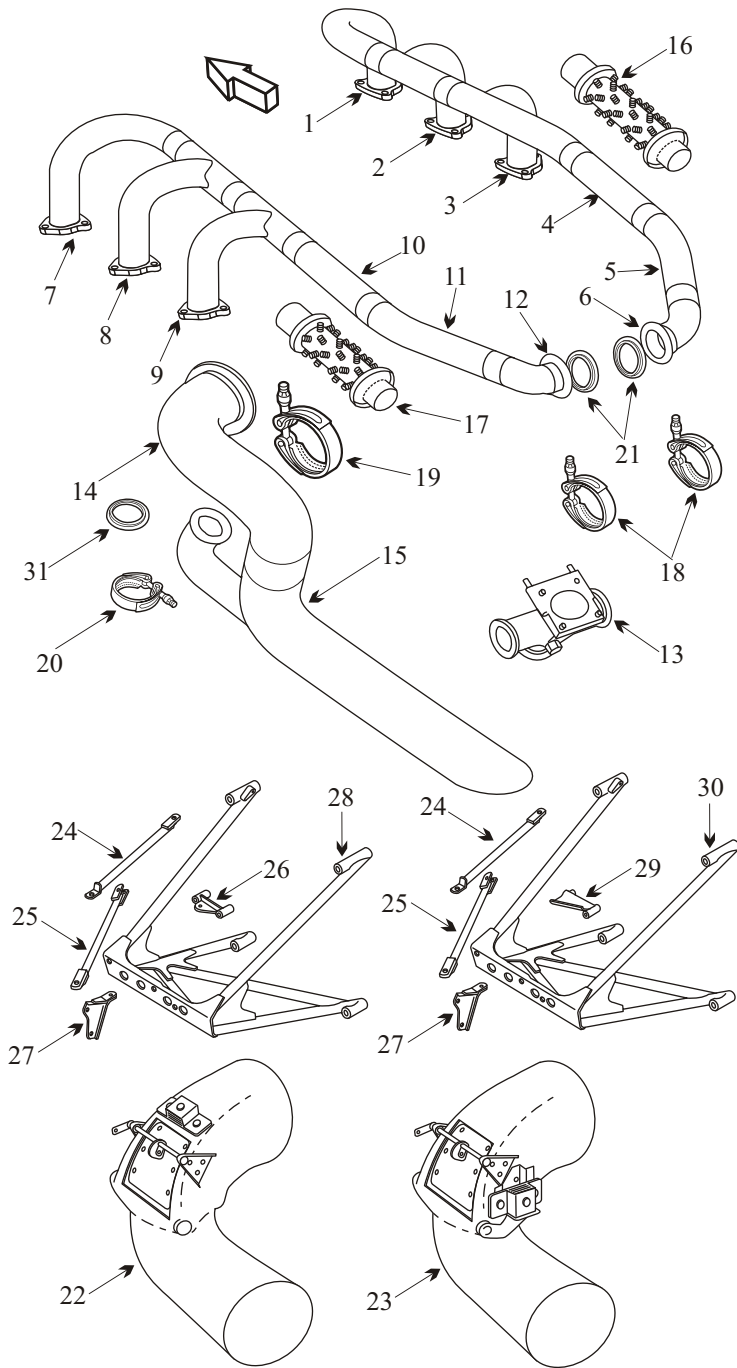


# PIPER PA-31-310/325 NAVAJO

Item	Part Number	Description
1	LW-10159	RISER RIGHT HAND FRONT
2	LW-10160	RISER RIGHT HAND CENTER
3	LW-10161	RISER RIGHT HAND REAR
4	LW-15850	TUBE INTERMEDIATE RIGHT FRONT
5	LW-16792	ELBOW INTERMEDIATE RIGHT CENTER
6	LW-16793	ELBOW INTERMEDIATE RIGHT REAR
7	LW-10164	RISER LEFT HAND FRONT
8	LW-10163	RISER LEFT HAND CENTER
9	LW-10162	RISER LEFT HAND REAR
10	LW-15849	TUBE INTERMEDIATE LEFT FRONT
11	LW-16789	ELBOW INTERMEDIATE LEFT CENTER
12	LW-16790	ELBOW INTERMEDIATE LEFT REAR
13	LW-12127	TRANSITION WITH STUDS
14	40310-08	UPPER TAILPIPE
15	40310-09	LOWER TAILPIPE
16	6300	HEATER PIPE RIGHT HAND FRONT
17	6100	HEATER PIPE LEFT HAND FRONT
18	LW-12093-5	CLAMP ELBOW TO TRANSITION
19	587-584	CLAMP TAILPIPE
20	LW-12125-3	CLAMP TURBO BYPASS TOP
NS	LW-12093-6	CLAMP TURBO BYPASS BOTOM
21	78083	GASKET ELBOW TO TRANSITION
NS	LW-15619	GASKET MANIFOLD (STANDARD)
NS	LW-15486	GASKET MANIFOLD (NO BLOW)
NS	75845	GASKET WASTEGATE
22	41567-00	INDUCTION AIR TUBE PA-31-310
23	54916-02	INDUCTION AIR TUBE PA-31-325
24	LW-18248	ROD TURBO SUPPORT RIGHT HAND
25	LW-16965	ROD TURBO SUPPORT LEFT HAND
26	76770	BRACKET SUPPORT ROD PA-31-310
27	LW-10119	BRACKET TOP SUPPORT
28	LW-15952	TURBO SUPPORT MOUNT PA-31-310
29	LW-18459	BRACKET SUPPORT ROD PA-31-325
30	LW-12339	TURBO SUPPORT MOUNT PA-31-325
31	24096-225N	GASKET BY PASS
NS	40007-007	ENGINE MOUNT
NS	J-9612-8	SHOCK MOUNT
NS	J-7763-1	SHOCK MOUNT
NS	VARIOUS	SEAT BASE



- Inspect two piece tailpipes to ensure that they can be disassembled and the ends are standard nominal dimensions. This will determine if the new ordered stack will fit into the old stack.
- Inspect joints for freedom of movement and distortion.
- Inspect tail pipes for internal pitting and wall thickness especially at the outside radius, which is the thin section, and at support bracket.
- Inspect transition header for cracks
- Slip fit stacks should be ordered as a complete assembly to ensure good joint integrity with smooth slip fits.

## AD 82-16-05

Applies to S/N's 31-2 thru 31-8312019 equipped with P/N's 455-301, 555-376, 555-511 or 555-366 couplings. Remove exhaust couplings and tailpipe and inspect V-band segments for cracks. Inspect flanges for cracks or distortion. Inspection required every 100 hrs of operation.

## AD 2003-24-07

Applies to S/N's 31-2 thru 31-8312019. Inspect rudder torque tube and associated ribs for corrosion. Repair or replace rib/rudder torque assembly. Inspection required every 12 months.