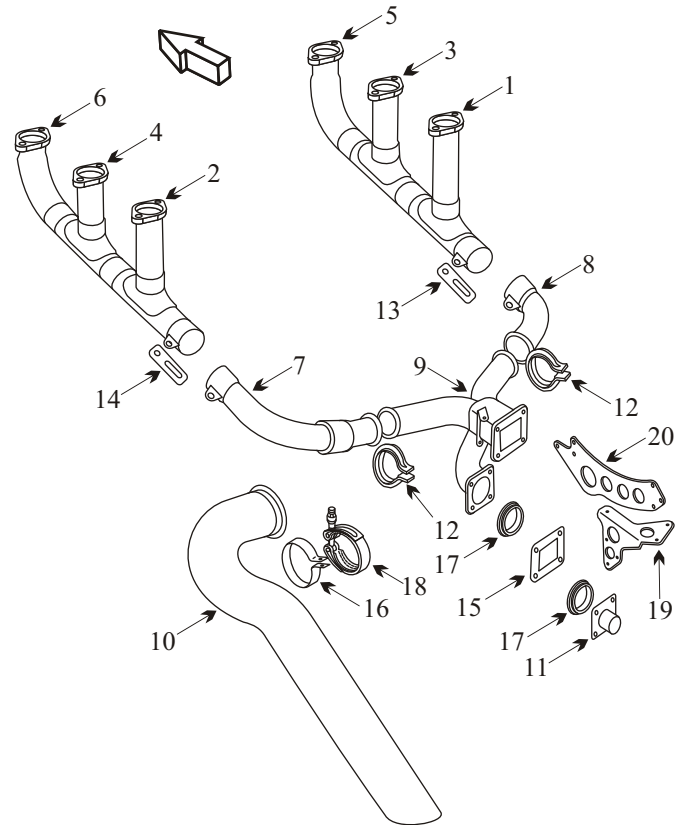


PIPER PA-34-220T SENECA V

WITH CONTINENTAL LTS10-360-RB
SN 3449001 AND ON

Item	Part Number	Description
1	640964-101*	RIGHT REAR CYL #1
1	643861-101	RIGHT REAR CYL #1 (654265)
2	640964-102*	LEFT REAR CYL #2
2	643861-102	LEFT REAR CYL #2 (654264)
3	640964-103*	RIGHT CENTER CYL #3
3	643861-103	RIGHT CENTER CYL #3 (654263)
4	640964-104*	LEFT CENTER CYL #4
4	643861-104	LEFT CENTER CYL #4 (654262)
5	640964-105*	RIGHT FRONT CYL #5
5	643861-105	RIGHT FRONT CYL #5 (654261)
6	640964-106*	LEFT FRONT CYL #6
6	643861-106	LEFT FRONT CYL #6 (654260)
7	654400	ELBOW LEFT HAND
8	654401	ELBOW RIGHT HAND
9	654406	TRANSITION HEADER
10	655286	TAILPIPE
11	654404	TURBO BYPASS
12	654407	CLAMP LH & RH ELBOW
13	654305	TIE ROD EXHAUST LEFT HAND
-	654309	SPACER
14	654306	TIE ROD EXHAUST RIGHT HAND
-	630365	GASKET EXHAUST FLANGE
15	636465	GASKET TURBOCHARGER
-	654361	BRACKET TAILPIPE STRAP
16	654362	CLAMP TAILPIPE SUPPORTS
17	652457	GASKET WASTEGATE
18	653337	CLAMP TAILPIPE
19	654299	BRACKET AFTERCOOLER
20	654285	BRACKET TURBO INNER



Item	Part Number	Description
-	100718-006	ALTERNATE AIR BOX ASSY COVER
-	37105-000	ENGINE MOUNT
-	J-9613-58	SHOCK MOUNT

- Inspect joints for freedom of movement and distortion.
- Inspect transition header for cracks
- Slip fit stacks should be ordered as a complete assembly to ensure good joint integrity with smooth slip fits.